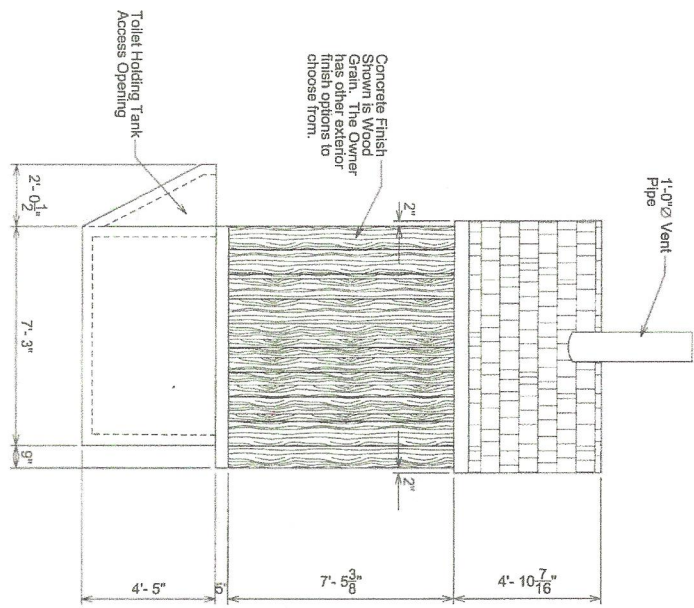
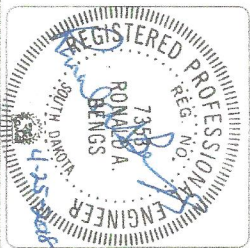


**REAR ELEVATION**  
Scale 1/4"=1'-0"



**SIDE ELEVATION**  
Scale 1/4"=1'-0"

- NOTES:
1. THE EXTERIOR FINISH SHOWN IS WOOD GRAIN, BUT OTHER FINISH TYPES ARE AVAILABLE.
  2. HOLDING TANK CAPACITY IS 165.2 c.f. = 1235.7 gallons



Sheet Number  
**2**

**INTERSTATE ENGINEERING**  
Professionals you need, people you trust.

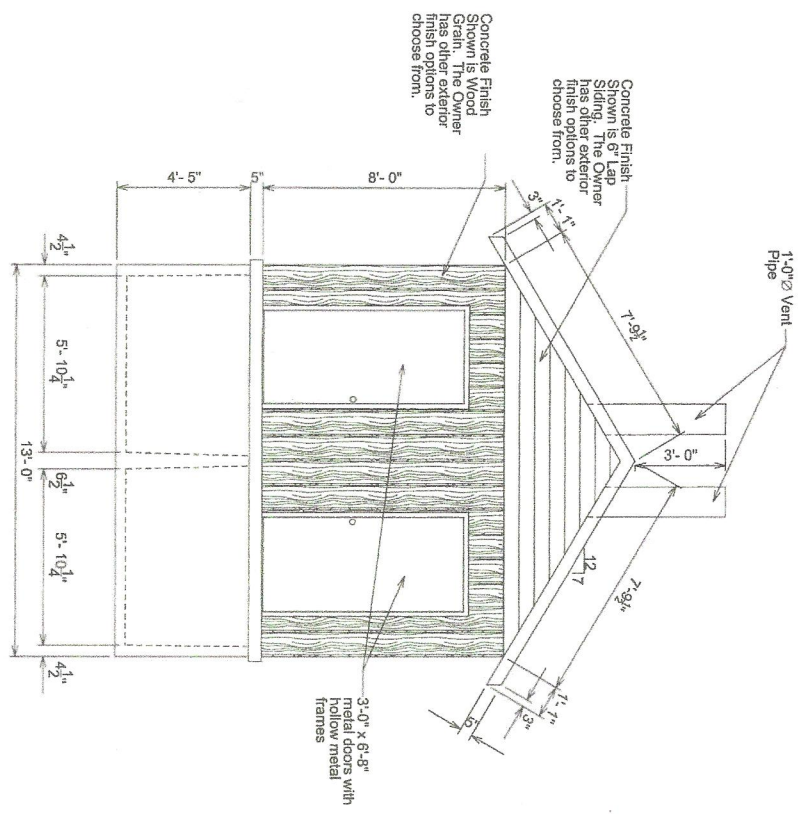
Interstate Engineering, Inc.  
P.O. Box 226  
123 E. Jackson Blvd, Suite 1  
Spearfish, S.D., 57783  
Ph: (605) 642-4772  
Fax: (605) 642-4773  
www.interstateeng.com  
Offices in North Dakota, Minnesota, Montana and South Dakota

**ROOM CLOVERIST DOUBLE**  
For: **BOOM CONCRETE, INC.**  
220 Girard Avenue, P.O. Box 437, Newell, SD 57760

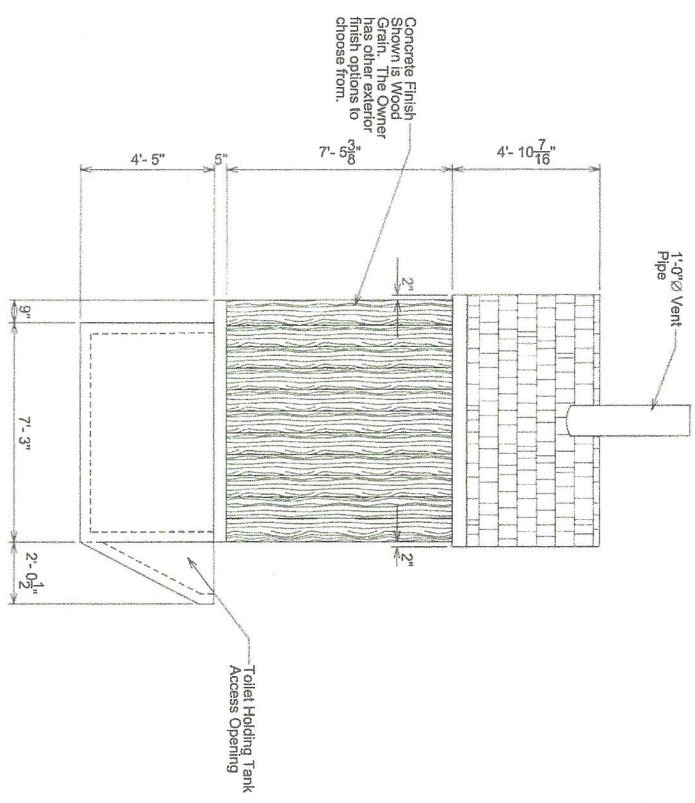
**ELEVATIONS**

Drawn By: AJD Surveyed By: - Project No: L17-04-213.02  
Checked By: RAB Designed By: AJD Date: February 6, 2018

Rev. No.	Date	By	Description



**FRONT ELEVATION**  
Scale 1/4"=1'-0"



**SIDE ELEVATION**  
Scale 1/4"=1'-0"

- NOTES**
1. THE EXTERIOR FINISH SHOWN IS WOOD GRAIN, BUT OTHER FINISHES TYPES ARE AVAILABLE.
  2. HOLDING TANK CAPACITY IS 185.2 c.f. = 1235.7 gallons



Sheet Number  
**3**

**INTERSTATE ENGINEERING**  
Professionals you need, people you trust

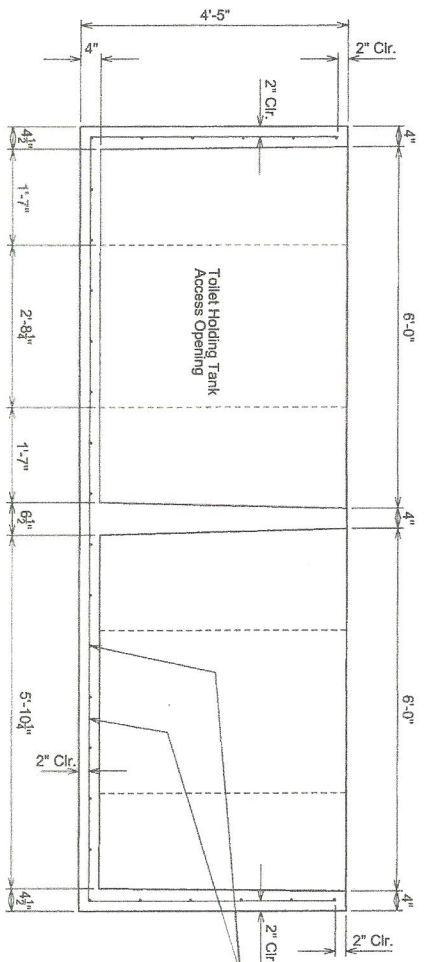
Interstate Engineering, Inc.  
P.O. Box 226  
123 E. Jackson Blvd. Suite 1  
Spearfish, S.D., 57783  
Ph (605) 642-4772  
Fax (605) 642-4773  
www.interstateeng.com  
Offices in: Rapid City, Minnekahta, Montana and South Dakota

**ROOM CLOVERMIST DOUBLE**  
For: BOOM CONCRETE, INC.  
220 Girard Avenue, P.O. Box 437, Newell, SD 57760

**ELEVATIONS**

Drawn By: AJD    Surveyed By: -    Project No: L17-04-213.02  
Checked By: RAB    Designed By: AJD    Date: February 6, 2018

Rev. No.	Date	By	Description

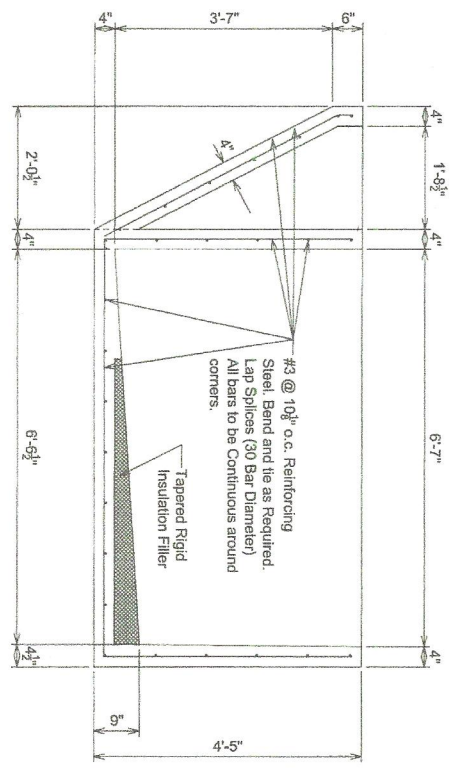


**HOLDING TANK SECTION 1**  
Scale 1/2"=1'-0"

**HOLDING TANK NOTES**

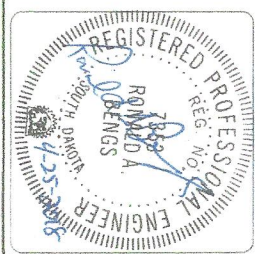
1. THE MANUFACTURER HAS SUPPLIED A E.P.A. APPROVED LINER IN THE HOLDING TANK. THIS LINER IS CAST INTO THE TANK.
2. HOLDING TANK CAPACITY IS 165.2 c.f. = 1235.7 gallons.
3. PROVIDE ALL ACCESSORIES NECESSARY TO SUPPORT REINFORCING AT POSITIONS SHOWN ON THE DRAWINGS.

#3 @ 10<sup>1/2</sup>" o.c. Reinforcing  
Steel, Bend and tie as Required,  
Lap Splices (30 Bar Diameter)  
All bars to be Continuous around  
corners.



**HOLDING TANK SECTION 2**  
Scale 1/2"=1'-0"

#3 @ 10<sup>1/2</sup>" o.c. Reinforcing  
Steel, Bend and tie as Required,  
Lap Splices (30 Bar Diameter)  
All bars to be Continuous around  
corners.



Sheet Number  
**10**

**INTERSTATE ENGINEERING**  
Professionals you need, people you trust.

Interstate Engineering, Inc.  
P.O. Box 226  
123 E. Jackson Blvd. Suite 1  
Spearfish, S.D., 57783  
Ph (605) 642-4772  
Fax (605) 642-4773  
www.interstateeng.com  
Offices in North Dakota, Minnesota, Montana and South Dakota

BOOM CLOVERMIST DOUBLE  
For: BOOM CONCRETE, INC.  
220 Girard Avenue, P.O. Box 437, Newell, SD 57760

**HOLDING TANK REINFORCEMENT LAYOUT**

Drawn By: AJD    Surveyed By: -    Project No: L17-04-213.02  
Checked By: RAB    Designed By: AJD    Date: February 8, 2018.

Rev No.	Date	By	Description

